 **CAUTION**  
Before use, refer to the CAPR® User's Instructions, P/N 03521015 (received with all CAPR Helmets) for System Details.




**O.N. 2602-06**  
**6-Gang Charger**



**O.N. 2602-06B**  
**6-Gang**  
**Charger Bracket**  
(for 2600-02 Chargers)

**Symbol Definitions**

 Warning, Caution, or Note

**O.N.** Order Number

**P/N** Part Number

 **WARNING**

Use only if package is received unopened and contents are undamaged. If damage is noted, contact the shipper for replacement or repair.

Prior to using any MAXAIR® System or component, be sure to be familiar with the system's NIOSH approved configuration.

DO NOT use if any component is damaged. If any components are damaged or contaminated and therefore unfit for safe and effective use, they should be replaced immediately.

Only trained and experienced personnel who have read and understand the User's Instructions should use this product.

Failure to follow the User's Instructions, these and in the MAXAIR Systems User's Instructions, P/N 03521015, may be hazardous to the user's health.

The institution using this product in any application is responsible for determining the appropriateness of this equipment relative to regulatory requirements. Bio-Medical Devices Intl, Inc. does not recommend the appropriate systems for a particular institution or facility.

Use only MAXAIR Systems/ NIOSH approved compatible components.

NOT for use in atmospheres immediately dangerous to life or health (IDLH), and atmospheres containing less than 19.5% oxygen, or more than 25% oxygen.

If you need more information, contact your BMDI Sales Representative, or call BMDI customer service at 1-800-443-3842.

**Intended Use**

The MAXAIR Systems 6-Gang UL/CE Charger (2602-06) and Charger Bracket (2602-06B) are intended for use only when charging MAXAIR Systems' Lithium-Ion Batteries.

The 6-Gang Charger includes six 2600-02 UL/CE Chargers and is capable of charging up to six MAXAIR Systems' Lithium-Ion batteries simultaneously.

The Charger Bracket requires from one to six MAXAIR 2600-02 Chargers to be assembled with it to allow charging of from one to six MAXAIR Lithium-Ion batteries.

**Charging Protection from Electrical Surges**

It is highly recommended to always connect MAXAIR Chargers directly to a Surge Protection Device, adequate for all anticipated occurrences, during all charging activities of MAXAIR LIBs (Li-Ion Batteries), and whenever the Charger is connected to a mains power source.


To choose an appropriate surge protector you should consult with your Engineering department regarding specifics to your physical plant and geographical environment.

**Specifications**

ELECTRICAL SPECIFICATIONS	
ELECTRICAL OUTPUT	ELECTRICAL INPUT
VOLTAGE: UP TO 16.8 VDC	VOLTAGE: 100-240 VAC, 50-60Hz max.
CURRENT: UP TO 5.4 A	CURRENT: UP TO 3.0 A

**Recommended System Temperature Limits:**

- Use/Handling: 0°C to 54°C at a maximum 80% Relative Humidity.
- Charging: 0°C to 45°C at a maximum 80% Relative Humidity.
- Storage: 0°C to 35°C at a maximum 80% Relative Humidity.

 **NOTE**  
For general safety and sensible use it is recommended to connect and disconnect electrical devices in a standard sequence. The full connecting and disconnecting sequence for items required for battery charging is as follows.

**Connecting:**

1. Connect the surge protector to the main (wall) power source and power it on.
2. Connect the Charger to the surge protector.
3. Connect the Battery to the Charger.

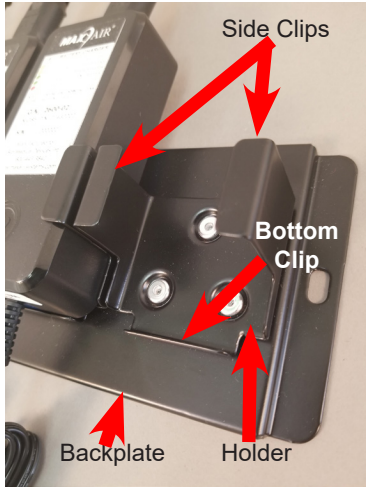
**Disconnecting:**

1. Disconnect the Battery from the Charger.
2. Disconnect the Charger from the surge protector.
3. Turn off and then disconnect the surge protector from the main (wall) power source.

**CAUTION**  
Before use, refer to the CAPR® User's Instructions, P/N 03521015 (received with all CAPR Helmets) for System Details.

**2602-06B 6-Gang Charger Bracket - Requires one to six 2600-02 Chargers (purchased separately)**

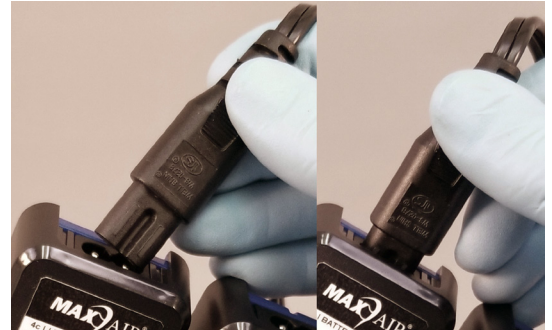
Assemble from 1 to 6 MAXAIR Systems 2600-02 Chargers to the Gang Charger Bracket



1. Hold the Bracket Backplate securely in one hand and slide a 2600-02 Charger into an empty Charger Holder, with battery connection cord towards the Bottom Clip.



2. Continue pushing Charger down into the Holder until the Charger bottom is firmly against the Bottom Clip.



3. Connect one of the six extensions of the Charger Power Cord securely to the Power Cord Connector on one Charger.

4. Repeat steps 1-3 for each additional Charger to be installed on the Charger Bracket.

5. To remove a Charger from the Bracket, reverse steps 1-3..

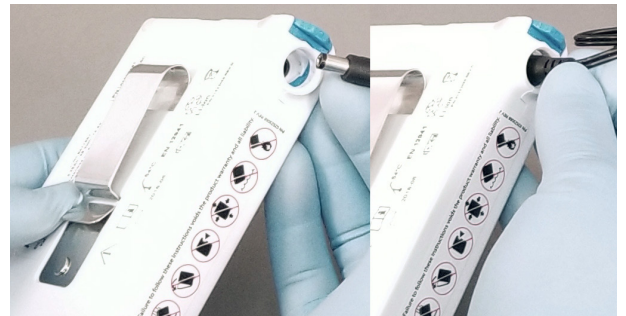
6. When fully assembled and mounted, follow steps 6.- 7. for use (below).

**2602-06 6-Gang Charger, UL/CE - Fully Assembled**



The 6-Gang Charger ships fully assembled with six 2600-02 chargers. Screws for mounting on a cart, and anchors for mounting on a wall are included as options.

7. When ready to charge, connect the Gang Charger Power Cord to an appropriate Surge Protector that is already connected to an appropriate wall mains power source and is powered on.



8. Connect from 1 to 6 MAXAIR Li-Ion Batteries to the Chargers. Push the Charger's Charging Cord Connector into the Battery's Charging Connector. Press all the way in firmly to ensure it is fully seated.

**LED Indicator Light (Refer to 2600-02 Charger IFU, P/N 01423205 for Charger and Charging Details)**



Charger LED

- FLASHING GREEN - Battery not connected.
- 2 Red Blinks - Battery is connected with wrong polarity.
- 3 Red Blinks - Charger output is shorted.
- 4 Red Blinks - Battery voltage low and may need replacing.
- 5 Red Blinks - Safety timer has run out - battery should be replaced.
- LED Off - Battery voltage is too high - battery should be replaced.