

CAUTION Before use, refer to the CAPR® User's Instructions, P/N 03521015 (received with all CAPR Helmets) for System Details.

CAPR Helmet Adapters



Symbol Definitions

- Warning, Caution, or Note
- Catalog Number
- NIOSH Number

WARNING

Use only if package is received unopened and contents are undamaged. If damage is noted, contact the shipper for replacement or repair.

Prior to using any MAXAIR® System or component, be sure to be familiar with the system's NIOSH approved configuration.

DO NOT use if any component is damaged. If any components are damaged or contaminated and therefore unfit for safe and effective use, they should be replaced immediately.

Only trained and experienced personnel who have read and understand the User's Instructions should use this product.

Failure to follow the User's Instructions, these and in the MAXAIR Systems User's Instructions, P/N 03521015, may be hazardous to the user's health.

The institution using this product in any application is responsible for determining the appropriateness of this equipment relative to regulatory requirements. Bio-Medical Devices Intl, Inc. does not recommend the appropriate systems for a particular institution or facility.

Use only MAXAIR Systems/ NIOSH approved compatible components.

NOT for use in atmospheres immediately dangerous to life or health (IDLH), and atmospheres containing less than 19.5% oxygen, or more than 25% oxygen.

If you need more information, contact your BMDI Sales Representative, or call BMDI customer service at 1-800-443-3842.

Intended Use

CAPR Helmet Adapters provide a quick and easy means to convert a CAPR Helmet between different Cuff, Shroud, and Hood configurations.

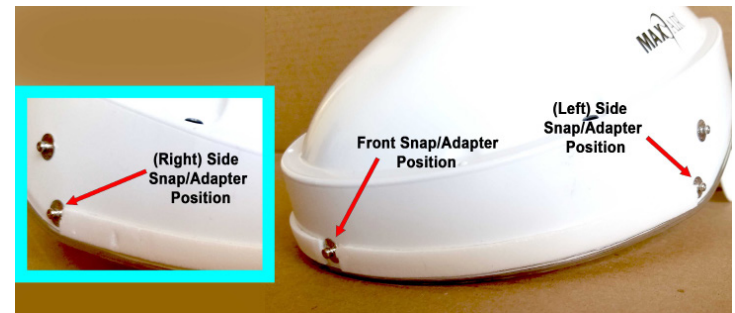
For Use With

The CAPR Adapters may be used with any MAXAIR CAPR Helmet.

Configuration Options for Cuffs, Shrouds, Hoods

CAPR Helmets have three snap/adapter positions for mounting the different choices of Head and Face Covers, Hoods, Shrouds, and Cuffs.

The three positions, front and sides, right and left, as indicated in the photo below.



The appropriate Adapter or Bare Snap (No Adapter) for each choice of Head and Face cover is indicated in Table 1. below.

When Helmet is to be configured for -	Adapter To Install -	
	Front of Helmet	Sides of Helmet
Cuffs or Shrouds	Front Long adapter	None - bare snap
2270-04 Hoods	Front Short adapter	Side adapters
2270-01 Hoods	None - bare snap	None - bare snap

Configuring Your System For Use

1. Find the desired Helmet configuration one of the three choices in the left column of Table 1.
2. Look in the middle column and determine what change is required, if any, to your Helmet front snap/adapter position.
3. Look in the right column of Table 1. and determine what changes are required, if any, to your Helmet side snap/adapter positions.
4. Proceed to the next pages for instructions for the necessary changes, adds or removes, to obtain the correct configuration for your choice of Head or Face Cover.

CAUTION Two additional, potentially necessary changes are noted on page 4.

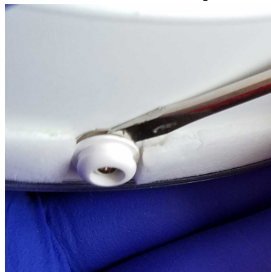
CAUTION Before use, refer to the CAPR® User's Instructions, P/N 03521015 (received with all CAPR Helmets) for System Details.

Correct Configuration of Adapters

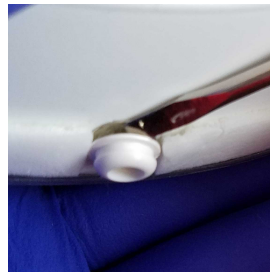


Remove an Adapter from a Snap/Adapter Position

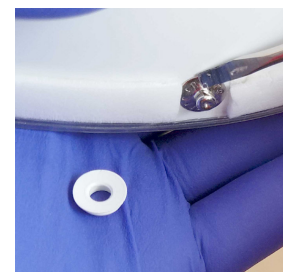
Remove Front, Short Adapter



1. Wedge a thin, flat blade between the Adapter base and the Helmet.



2. Twist the flat blade to push the Adapter off the Helmet.

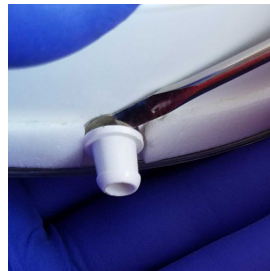


3. Continue twisting until the Adapter pops off the Snap.

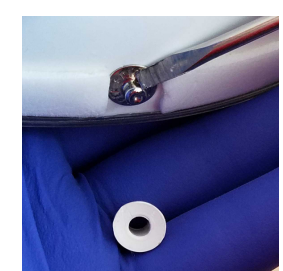
Remove Front, Long Adapter



1. Wedge a thin, flat blade between the Adapter base and the Helmet.

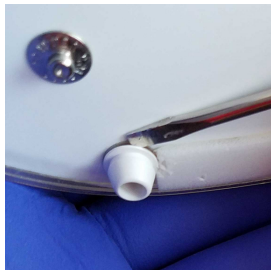


2. Twist the flat blade to push the Adapter off the Helmet.

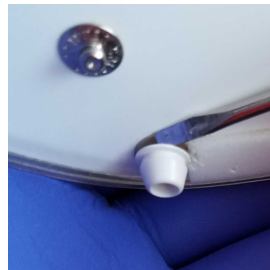


3. Continue twisting until the Adapter pops off the Snap.

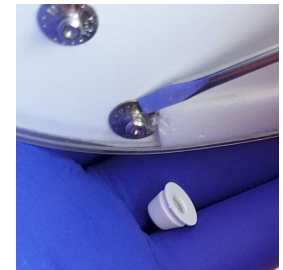
Remove Side Adapter



1. Wedge a thin, flat blade between the Adapter base and the Helmet.



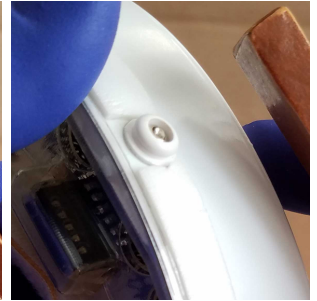
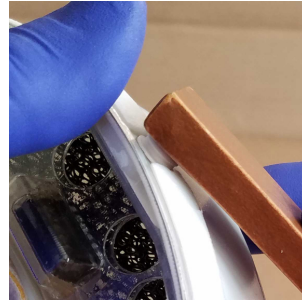
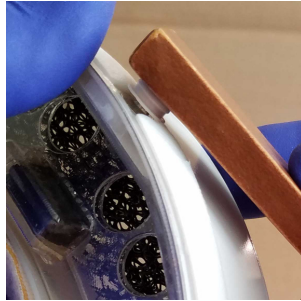
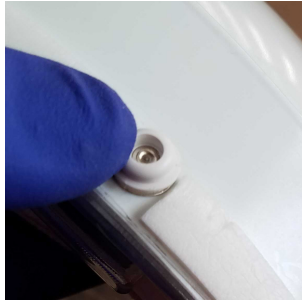
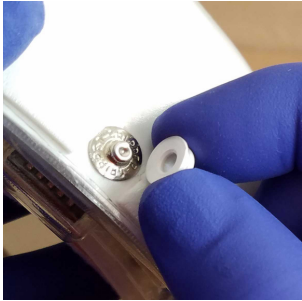
2. Twist the flat blade to push the Adapter off the Helmet.



3. Continue twisting until the Adapter pops off the Snap.

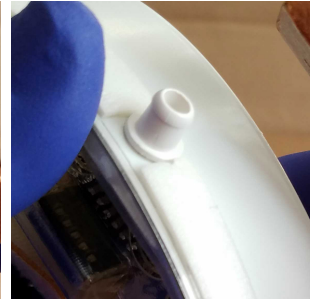
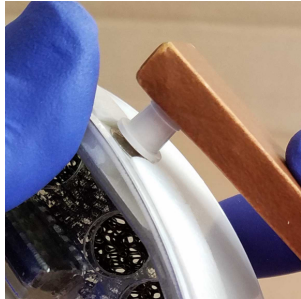
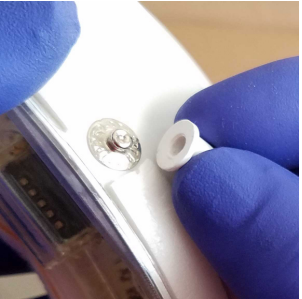
Add an Adapter to a Snap/Adapter Position

Add the Front, Short Adapter



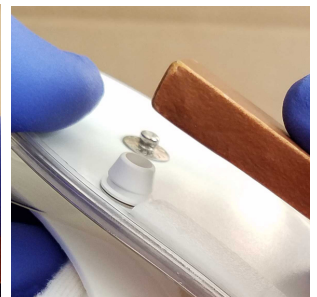
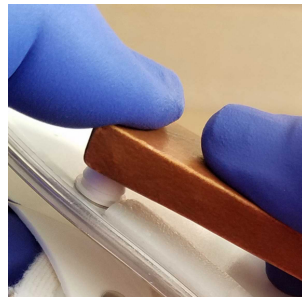
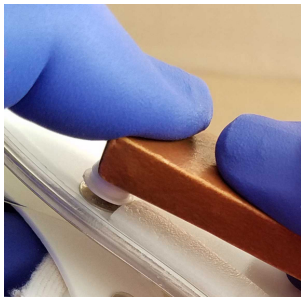
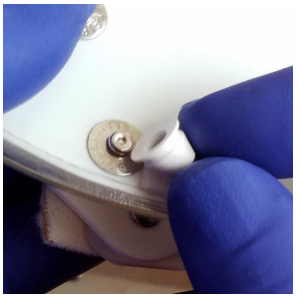
1. Place a Short Front Adapter over one Helmet (Lower) Side Snap and Hold it in position.
2. Place a flat surface/blade (e.g. handle of a letter opener) over the Adapter.
3. Press down on the Adapter with the flat surface until the Adapter snaps into position and is secure on the Helmet snap.

Add the Front, Long Adapter



1. Place a Short Front Adapter over one Helmet (Lower) Side Snap and Hold it in position.
2. Place a flat surface/blade (e.g. handle of a letter opener) over the Adapter.
3. Press down on the Adapter with the flat surface until the Adapter snaps into position and is secure on the Helmet snap.

Add the Side Adapter



1. Place a Short Front Adapter over one Helmet (Lower) Side Snap and Hold it in position.
2. Place a flat surface/blade (e.g. handle of a letter opener) over the Adapter.
3. Press down on the Adapter with the flat surface until the Adapter snaps into position and is secure on the Helmet snap.

To Fill a Helmet Rivet Hole with a Rivet

CAPR Helmets have five or seven Rivet Holes around the top ridge of the Helmet, depending on the specific version of CAPR Helmet and depending on what changes the particular helmet underwent previously. Two or four of these Rivet Holes may not have Rivets in them depending on previous changes. Any and all Rivet Holes need to be filled with plastic Rivets.

Figure 1. Shows a CAPR Helmet with all the five Rivet Holes with Rivets, and no holes in the front two locations.

Figure 2. BLACK arrows show two holes in the Helmet front that need to be filled with Rivets.

Figure 2. RED arrows show two rivets in place that may actually be holes on a particular Helmet - if the rivets are not in these two locations, the holes need to be filled with Rivets.



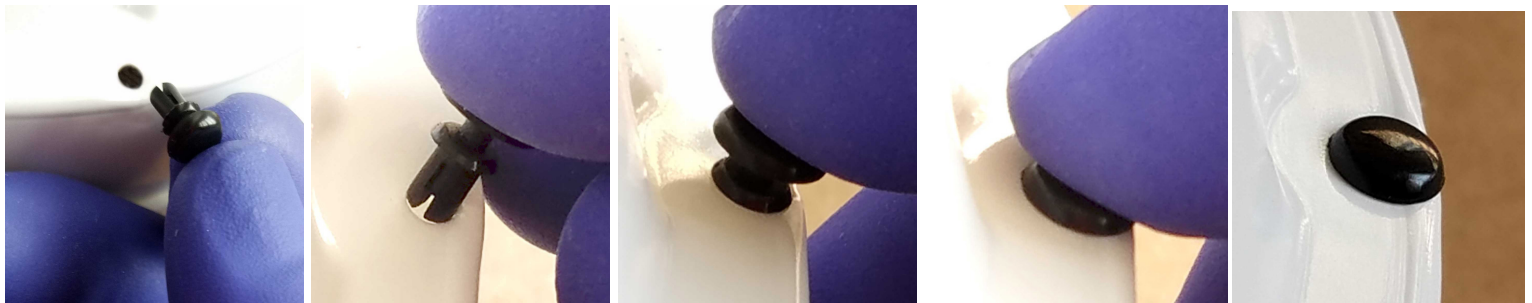
Figure 1.



Figure 2.



(Plastic) Rivet and Rivet Hole to be filled.



1. Locate a plastic Rivet and a Rivet Hole that does not have a Rivet in place.
2. Place the split end of the Rivet in the Hole.
3. Lightly press the Rivet Head down until the "shoulder" of the Rivet touches the Helmet.
4. Press down firmly on the Rivet Head to snap the Rivet fully in position.
5. Ensure the Rivet Head is fully down on the Helmet and is secure.

To Remove the Rear Helmet Adapter for Newer FCCs

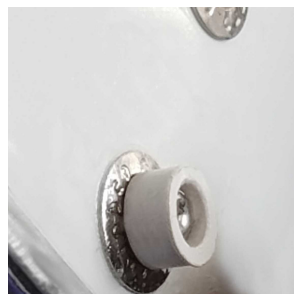
When using older CAPR Helmets with newer configurations a newer version Filter Cover Cap (FCC) may be purchased. A newer version FCC has a smaller hole in the T-Tab in the rear (B). This FCC does not use the Rear Snap Adapter that the older FCCs (A) used.



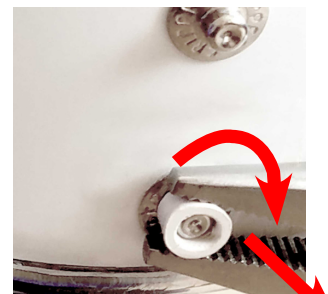
Older FCC with large hole in T-Tab for rear Helmet Adapter.



Newer FCC with small hole in T-Tab that can NOT be used with the rear Helmet Adapter.



1. The Helmet Rear Adapter may be removed with a thin flat blade technique as on page 2. Alternatively, a small pliers may be used as in next steps 2. and 3.



2. Firmly grasp the Rear Helmet Adapter with a small pliers and gently tilt/twist the pliers and pull forward, away from the helmet.



3. Continue to tilt/twist the pliers and pull forward until the Rear Adapter is off the Helmet.