



### CAUTION

Before proceeding, contact BMDI Customer Service, 800-443-3842, to coordinate replacement.



### 6-Gang Cord

P/N 01421149

### Symbol Definitions



Warning, Caution, or Note



Reference Number



Part Number



### WARNING

Use only if package is received unopened and contents are undamaged. If damage is noted, contact the shipper for replacement or repair.

DO NOT use if any component is damaged. If any components are damaged or contaminated and therefore unfit for safe and effective use, they should be replaced immediately.

Only trained and experienced personnel who have read and understand the User's Instructions should use any MAXAIR product.

Failure to follow the User's Instructions, these and in the MAXAIR Systems User's Instructions, P/N 03521015, may be hazardous to the user's health.

The institution using this product in any application is responsible for determining the appropriateness of this equipment relative to regulatory requirements. Bio-Medical Devices Intl, Inc. does not recommend the appropriate systems for a particular institution or facility.

Use only MAXAIR Systems/ NIOSH approved compatible components.

NOT for use in atmospheres immediately dangerous to life or health (IDLH), and atmospheres containing less than 19.5% oxygen, or more than 25% oxygen.

If you need more information, contact your BMDI Sales Representative, or call BMDI customer service at 1-800-443-3842.

### Intended Use

This Guide is only intended to provide an overview for the replacement of a damaged or otherwise unusable 6-Gang Power Cord in a MAXAIR 2780-06 Cart.

### For Use By

The Power Cord replacement procedure should only be performed by or under the direct supervision of an experienced Biomedical Engineer, by one familiar with electro-mechanical devices and safe operating procedures, and one with demonstrated competency in the safe use of small hand tools.

### For Use With

The 01421149 6-Gang (Power) Cord is to be used with the MAXAIR 2780-06 Cart.

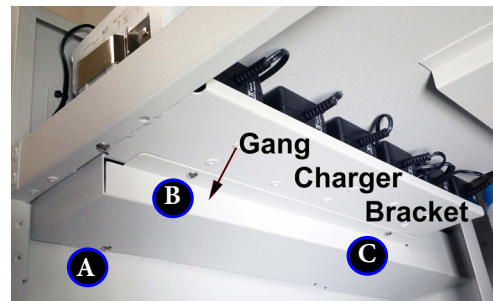


### WARNING

Ensure the Cart Power Cord is NOT connected to any power source before proceeding.

### Disassembly

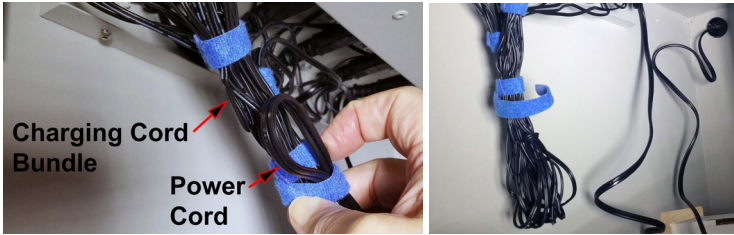
Open the Cart Doors and locate the Gang Charger Bracket on the Cart left side under the Top Lid.



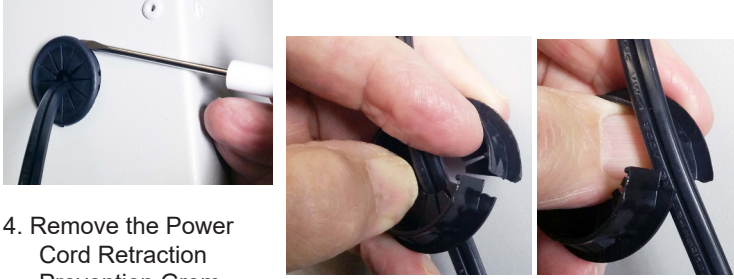
1. Use a 5/64 Allen Wrench to loosen screw A and remove screws B and C.



2. Slide Bracket towards right side of Cart and remove it from the Charger area to expose the Power Cord and Charger Cord bundles.



3. Separate the Charging Cord Bundle (small wires) from the Power Cord (large wire).



4. Remove the Power Cord Retraction Prevention Grommet from the back top right side of the Cart with a thin-blade screwdriver.

5. Open the grommet and remove it from the Power Cord.



6. From inside the Cart, pull the Power Cord through the Cart Cord Opening.

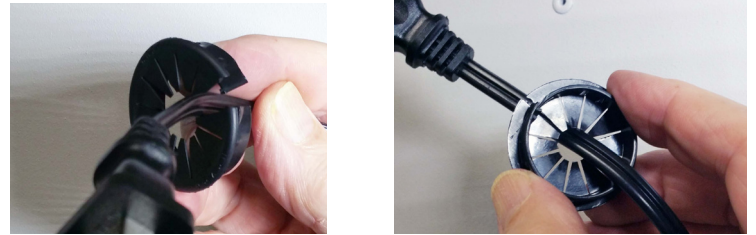
7. Disconnect each of the Power Cord connectors from each of the six Chargers and dispose of the old Power Cord appropriately.

### Assembly

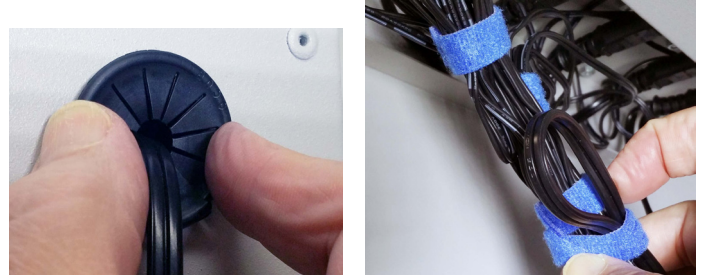


1. Securely connect the new Power Cord connectors to each of the six Chargers.

2. Push the new Cord Plug out through the Cart Cord Opening to behind the Cart.



3. Place the grommet around and secure it to the new Power Cord.



4. Secure the grommet back into the Cart Cord Opening by firmly pressing it against the Cart, all around its circumference.

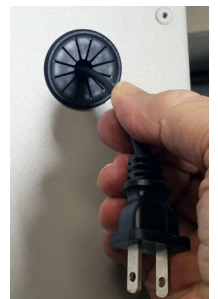
5. Bundle the new Power Cord with the Charger Cord Bundle.



6. Ensure the new Power Cord is fully out the back of the Cart, compact the Cord Bundles, and replace the Gang Charger Cover Bracket.



7. Re-attach the two removed screws, then tighten all three screws to ensure the Cover Bracket is securely in place.



8. From the Cart outside back, push the new Power Cord back into the Cart Cord Opening up to the Cord Connector.