

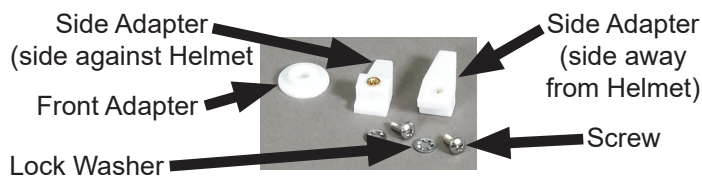


### CAUTION

Before use, refer to the CAPR® User's Instructions, P/N 03521015 (received with all CAPR Helmets) for details.



P/N 2099-19



Warning, Caution, or Note



Part Number



### WARNING

Use only if package is received unopened and contents are undamaged. If damage is noted, contact the shipper for replacement or repair.

Prior to using any MAXAIR™ System or component, be sure to be familiar with the system's NIOSH approved configuration.

DO NOT use if any component is damaged. If any components are damaged or contaminated and therefore unfit for safe and effective use, they should be replaced immediately.

Only trained and experienced personnel who have read and understand the User's Instructions should use this product.

Failure to follow the User's Instructions, these and in the MAXAIR User's Instructions, P/N 03521015, may be hazardous to the user's health.

The institution using this product in any application is responsible for determining the appropriateness of this equipment relative to regulatory requirements. Syntech Intl. does not recommend the appropriate systems for a particular institution or facility.

Use only MAXAIR NIOSH approved compatible components.

NOT for use in atmospheres immediately dangerous to life or health (IDLH), and atmospheres containing less than 19.5% oxygen, or more than 25% oxygen.

Flammability Level I: fabric may burn if exposed to open flame.

Follow current local regulations governing biohazard waste to safely dispose of used shrouds.

If you need more information, contact your MAXAIR Representative, or call MAXAIR customer service at 1-800-443-3842.

### Intended Use

These instructions are intended for converting a CAPR Helmet with "screw-on" standard side adapters to "screw-on" PR adapters for use with headcovers with PR style lens holes.

### Included with each P/N 2099-19



1. Five front PR Adapters



2. Five sets (10 each) side PR Adapters, screws, and lockwashers



### Remove Liner from the Helmet



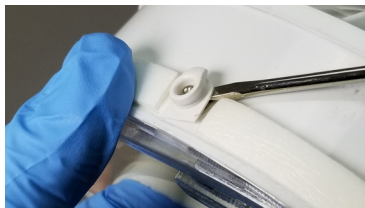
2. Remove the Liner per the Liner UIM P/N 03521265.



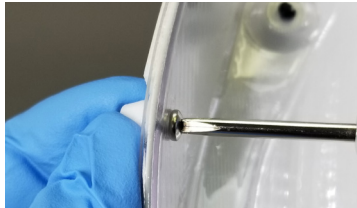
### CAUTION

Before use, refer to the CAPR® User's Instructions, P/N 03521015 (received with all CAPR Helmets) for details.

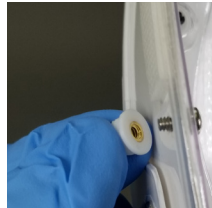
### Remove Standard Front and Side Adapters from the Helmet



1. Use a small, flat-blade screwdriver to pry between the base of the Front Adapter and the Helmet, then twist and lift the screwdriver blade to lift the Front Adapter off the Helmet.

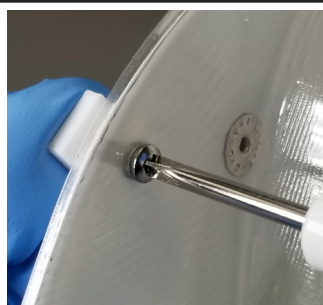


2. Use a small Phillips-head screwdriver to loosen the screw of one Side Adapter until the Side Adapter is free from the Helmet. Leave the screw fully inserted into the Helmet to facilitate engaging with the new PR Adapter.



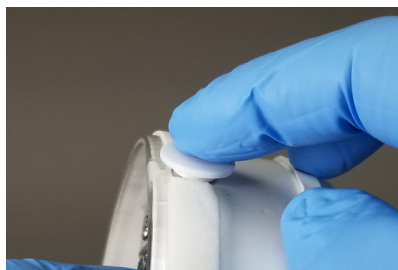
3. Repeat steps 2. for the other Side Adapter.

### Assemble PR Style Front and Side Adapters to the Helmet



1. On one side of the Helmet, place a lock washer over the thread end (outside) of the screw, then place one Side PR Adapter over the thread and turn about two turns to engage the Adapter to the screw.

2. Use a small Phillips-head screwdriver to securely tighten the Adapter to the Helmet, with the Adapter straight up, vertically.



3. Place one Front Adapter over the front Helmet Snap, then press on firmly until they audibly click securely together.

### Reassemble the Liner to the Helmet



1. Replace the Liner per the Liner UIM P/N 03521265.