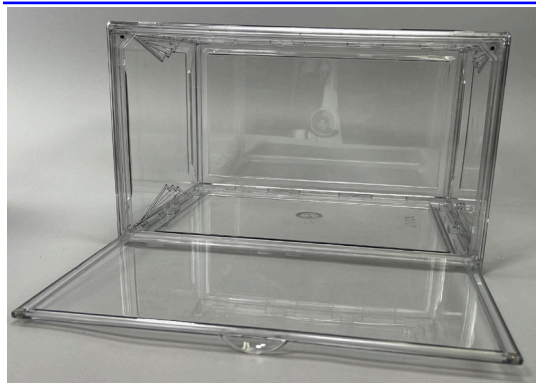




CAUTION

Before use, thoroughly read and follow this User Instruction and understand its Intended Use, Cautions, and Warnings.



REF 2771-01

Symbol Definitions



Warning, Caution, or Note

REF

Catalog Number



WARNING

Failure to follow the instructions contained herein may be hazardous to product and user safety.

Use only if package is received unopened and contents are undamaged. If damage is noted, contact the shipper for replacement or repair.

DO NOT use if any component is damaged. If any components are damaged or contaminated and therefore unfit for safe and effective use, they should be replaced immediately.

Only trained and experienced personnel who have read and understand these instructions should use MAXAIR Products.

The institution using this product in any application is responsible for determining the appropriateness of this equipment relative to all applicable safety and regulatory requirements. Syntech Intl, Inc. does not recommend the appropriate systems for a particular institution or facility.

Use only Syntech Intl, Inc. approved compatible components.

If you need more information, contact your Bio-Medical Devices International, Inc. (BMDI) DBA MAXAIR Systems Sales Representative, or call BMDI customer service at 1-800-443-3842.

Specifications

Material

Polyvinyl Chloride

Recommended Temperature Limits

Use/Handling: 0°C to 54°C at a maximum 80% Relative Humidity.

Storage: 0°C to 35°C at a maximum 80% Relative Humidity.

Charging: 0°C to 45°C at a maximum 80% Relative Humidity.

Regulatory

N/A

Intended Use

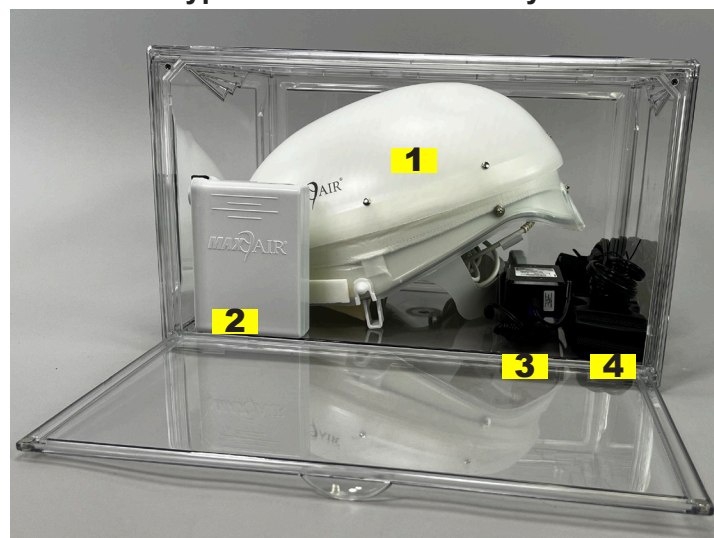
The 2771-01 Storage Box is intended for the storage of a fully assembled MAXAIR Helmet (Helmet, XP Filter, and Filter Cover Cap) and optionally a compatible charger, battery, and battery belt. The unit may be placed securely on a sturdy surface or it may be securely wall mounted. Multiple 2771-01 Storage Boxes may be stacked up to 3-high on a flat surface and when the bottom box in the stack is mounted securely to a wall.



WARNING

The 2771-01 Storage Box is not to have any object placed on its top or attached to its sides or bottom other than up to two matching 2771-01 Storage Boxes may be placed on top per these instructions.

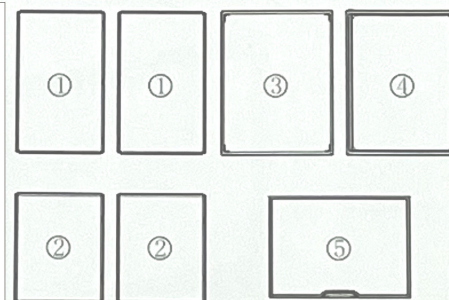
Storage Box with a typical MAXAIR Helmet System



1. 2081-03 MAXAIR Helmet Assembly with 2181XP-100 Filter 2061-08 Filter Cover Cap	2. 2500-36TSC Battery
3. 2600-02 Battery Charger	4. 2000-76 Battery Belt

Package Contents

- 2 long narrow pieces: Top and Bottom
- 2 short wide pieces: Right and Left Ends
- 1 long wide piece: Back
- 1 long wide piece with wide channels: Front Door Mount
- 1 long wide piece with lip: Front Door



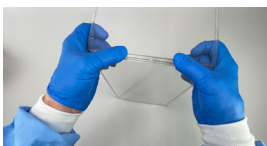
Assembly



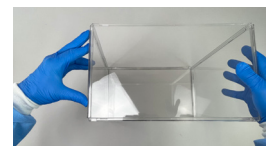
1. Start with one Side and a Bottom (same as the Top).



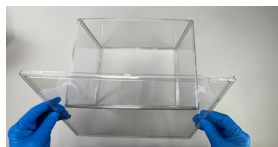
2. Insert edge of lower corner of Side (1) into lower corner side slot of Bottom (2).



3. Insert the Side full length edge into the Bottom side slot and press together firmly. Then repeat to attach the other Side to the Bottom.



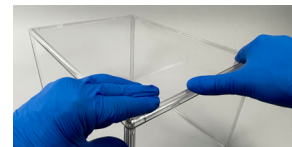
4. Place the Top onto the unattached side edges and press its side slots onto the side edges. Sides+Top+Bottom assembly are complete.



5. Place the Back onto the unattached edges on one side of the Sides+Top+Bottom assembly.



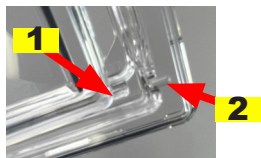
6. Press each Back corner down onto each corner of the Sides+Top+Bottom assembly. Ensure each join of three pieces is secure.



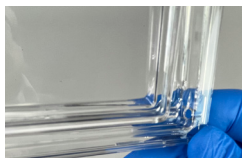
7. Press down all along all edge joins to ensure all edges are firmly seated between Sides, Top, Bottom, and Back.



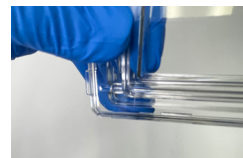
8. The Door attaches to the Door Mount.



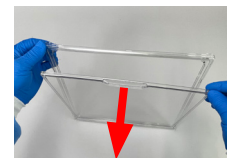
9. The two pieces hinge together at the lower right and left corners. The Door has a male pin (1) and the Mount has a female slot (2) at each corner.



10. On one lower corner insert the Door pin into the Mount slot.



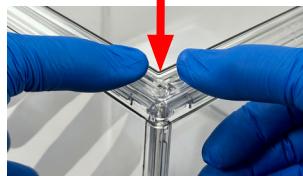
11. Repeat on the other lower corner.



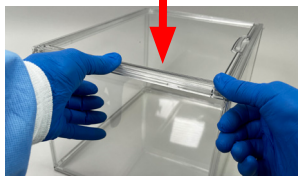
12. Ensure the Door is securely attached to the Door mount and that it opens and closes smoothly.



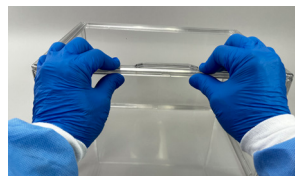
13. Place the Door and Mount assembly over the open side of the Sides+Top+Bottom assembly.



14. Press each Mount assembly corner firmly down on each corner of the Sides+Top+Bottom assembly.



15. Press down all along all edge joins to ensure all edges and corners of all joins on the entire Box assembly are firmly seated and secure.



16. Ensure the Door opens and closes smoothly and securely.



The Storage Box assembly is complete.



CAUTION

A maximum of three (3) 2771-01 Storage Boxes may be stacked vertically.

