

CAUTION
Before use, read and follow the Base System User Instructions received with all MAXAIR® Helmets for warnings, cautions, and details (also available at maxair-systems.com).



REF 2400PRS-208 **P/N** 07631305

Warning, Caution, or Note
REF Catalog Number **P/N** NIOSH Number

WARNING
Use only if package is received unopened and contents are undamaged. If damage is noted, contact the shipper for replacement or repair.

Prior to using any MAXAIR® System or component, be sure to be familiar with the system's NIOSH approved configuration.

DO NOT use if any component is damaged. If any components are damaged or contaminated and therefore unfit for safe and effective use, they should be replaced immediately.

Only trained and experienced personnel who have read and understand the User's Instructions should use this product.

Failure to follow the User's Instructions, these and in the MAXAIR® User's Instructions, P/N 03521015, may be hazardous to the user's health.

The institution using this product in any application is responsible for determining the appropriateness of this equipment relative to regulatory requirements. Syntech Intl. does not recommend the appropriate systems for a particular institution or facility.

Use only MAXAIR® NIOSH approved respirator configurations.

NOT for use in atmospheres immediately dangerous to life or health (IDLH), and atmospheres containing less than 19.5% oxygen, or more than 25% oxygen.

Flammability Level I: fabric may burn if exposed to open flame.

Follow current local regulations governing biohazard waste to safely dispose of used shrouds.

If you need more information, contact your MAXAIR Representative, or call MAXAIR® customer service at 1-800-443-3842.

Intended Use

The MAXAIR® 2400PRS-208 Sterile Peel Away Lens is for use with MAXAIR® System Headcovers with fixed Integrated Lenses.

The optional Peel Away provides two layers of removable thin film lenses to protect the Headcover's fixed Integrated Lens.

Specifications

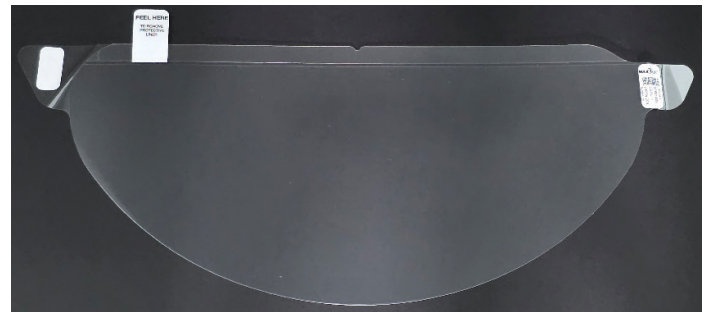
Material:
Peel Away Lenses are PET

Recommended System Temperature Limits	
Use/ Handling	0°C to 54°C at a maximum 80% Relative Humidity
Charging	0°C to 45°C at a maximum 80% Relative Humidity
Storage	0°C to 35°C at a maximum 80% Relative Humidity

Regulatory

NIOSH PAPR100-N

BACK SIDE: For Peeling Protective Layer off Adhesive

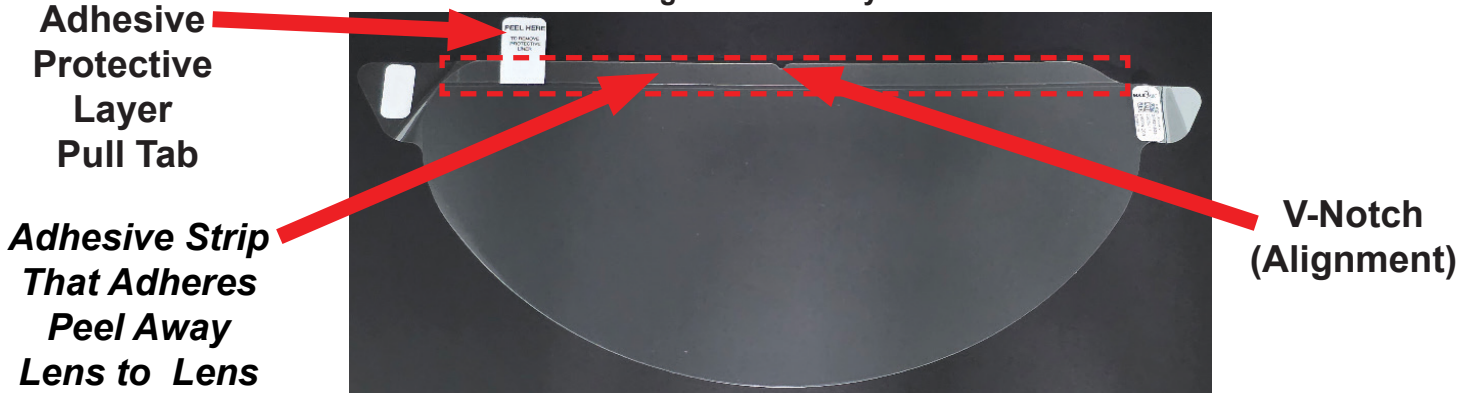


FRONT SIDE: Ready to Peel Off Layer 1



Overview: Components, Labeling, Sequence of Use (Right and Left are with regards to the Wearer's Perspective)

BACK SIDE: For Peeling Protective Layer off Adhesive



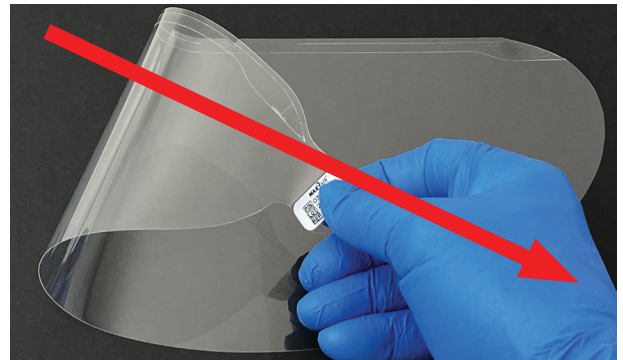
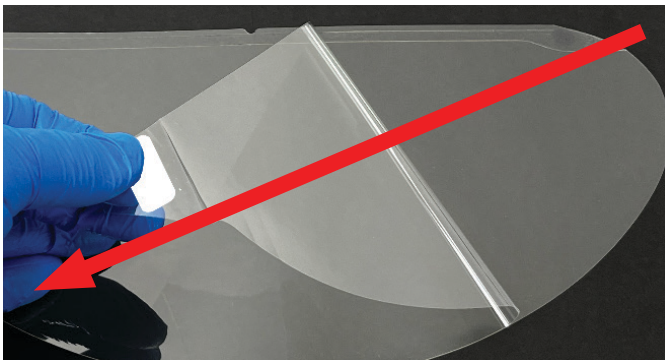
Lens Back (will be against the Headcover's Integrated Lens facing inward towards the Helmet): Both white tabs' writing face outward away from the Helmet.

FRONT SIDE: When Installed, Ready to Peel Off Layer 1



Lens Front (will face away from the Helmet): Both white tabs' writing face inward towards the Helmet

FRONT SIDE: Peeling Direction (Relative to Wearer)

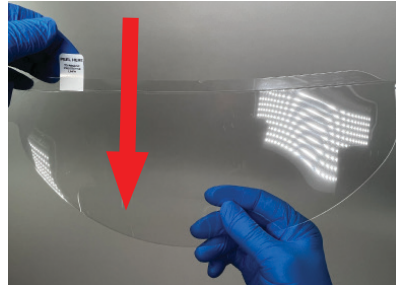


Prepping the Peel Away prior to Assembly to the Headcover's Integrated Lens

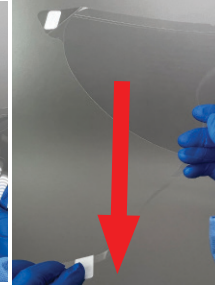
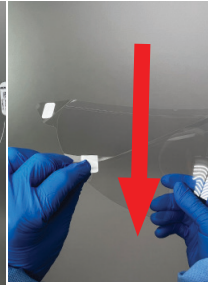
NOTE It is best to apply the Peel Away Lens to the Headcover Integrated Lens as soon as possible to avoid dust, fingerprints, etc. to contaminate the Integrated Lens surface.



1. Using sterile technique, remove the Peel Away Lens from its sterile pouch. Dispose of pouch appropriately.



2. From the BACK SIDE of the Peel Away Lens, grasp the "Peel Here" tab and gently and briskly pull it **straight downward**, from the top of the lens to below the bottom of the lens, and fully down and away from the lens to remove the thin adhesive protection strip.



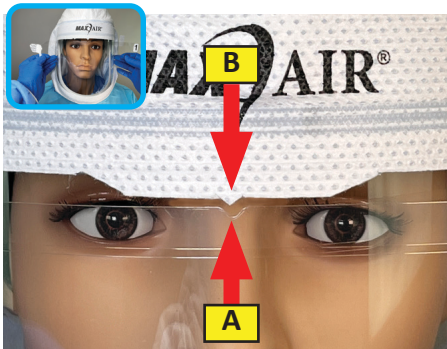
CAUTION

1. Be very certain to pull the Peel Tab precisely downward and perpendicular to the horizontal (long) width of the Lens.
2. Be very careful not to touch the strip of adhesive along the top edge of the back side of the Peel Away Lens.

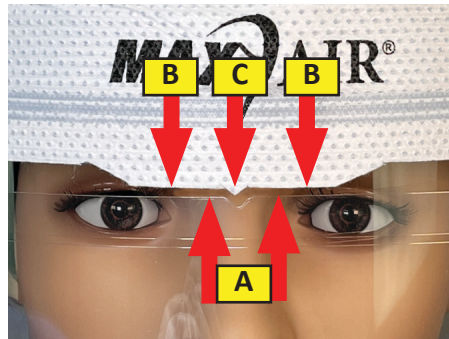
Adhering the Peel Away Lens to the Headcover's Integrated Lens

CAUTION Ensure you have the alignment and parallelism described in 1 and 2 BEFORE touching the adhesive layer on the back side of the Peel Away Lens to the Integrated Lens. You will NOT be able to realign and reattach the Peel Away Lens if adhesion is initiated and then needs to be repositioned. If repositioning is needed, a new Peel Away will be necessary and the process started again .

CAUTION The entire adhesive strip on the Back Side of the Peel Away Lens must be positioned on the Integrated Lens; NO PART of the Peel Away Lens Adhesive strip may be touching any of the cloth material around the Peel Away Lens.



1. Holding the Peel Away near each of its side tabs, slightly bowed to the front and not yet touching the Peel Away to the Headcover Integrated Lens, align the V-notch on the Peel Away (A) vertically in-line with the Headcover Center Point (B).



2. Simultaneously raise the top edge of the Peel Away (A) so that it is parallel with and almost (but not) touching the bottom edge of the Headcover material (B), to each side of the Headcover Center Point (C).



3. Maintaining the alignment and parallelism in 1 and 2, move the Peel Away back against the front of the Integrated Lens. Push the Peel Away side tabs towards the back and against the Integrated Lens and use the thumbs to smooth the top of the Peel Away smoothly and fully against the Integrated Lens. Ensure the entire Peel Away lens, less the pull tabs, is smoothly and firmly against the Integrated Lens, particularly out at the outer edges of the Peel Away (D).

CAUTION Ensure the Peel Away is firmly pressed against the Integrated Lens, particularly out at the outer edges of the Peel Away (D).

Remove Peel Away Lens Layers as Needed (Reference to Right and Left are from Wearer's View)



1. When it is deemed necessary to remove a Peel Away layer, grasp the Top Layer Tab on the wearer's upper left side and pull downward and to the right to remove the Top Layer Lens. Discard the Peel Away Layer as contaminated waste.



2. When it is deemed necessary to remove another Peel Away layer, grasp the Bottom Layer Tab on the wearer's upper right side and pull downward and to the left to remove the Bottom Layer Lens. Discard the Peel Away Layer as contaminated waste.